

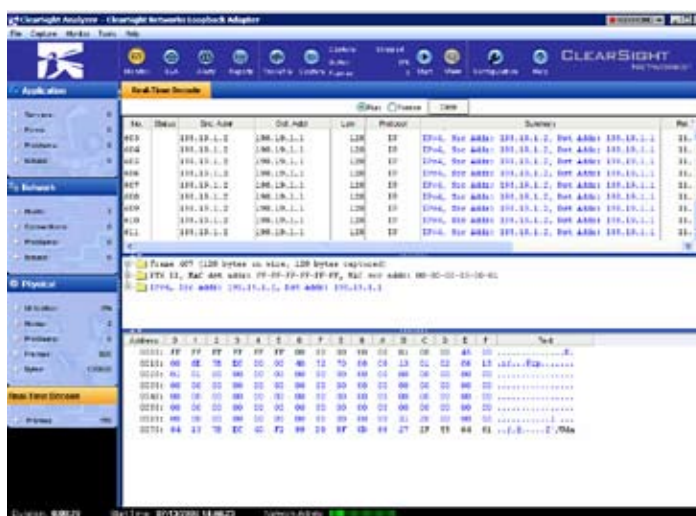


# Spirent TestCenter™ BPK-1029A ENHANCED CAPTURE AND DECODE BASE PACKAGE A

Testers spend a large percentage of their time analyzing the small percentage of test cases that fail. Spirent TestCenter's Enhanced Capture and Decode Base Package accelerates time-to-market and lowers product and service development costs by enhancing the tester's ability to quickly isolate, analyze, troubleshoot and fix software and hardware issues.

## APPLICATIONS

- Troubleshoot routing, switching and access issues by capturing and analyzing transmitted and received control plane packets
- Precisely characterize and solve timing issues using the full resolution of Spirent TestCenter's time stamp – 1,000 times more precise than what is displayed using the most popular decode programs
- Quickly analyze detailed test data using the information included in Spirent TestCenter's signature field – stream number, sequence number, time stamp
- Troubleshoot routing issues using ladder diagrams of key protocols – BGP, OSPF, OSPFv2, RIP and RIPng
- Troubleshoot L2 preamble testing using Spirent TestCenter's preamble capture and display capabilities
- Enhance the hardware filtering available on Spirent TestCenter with additional software filtering



BPK-1029A enhances the standard capture and decode capabilities of Spirent TestCenter by providing:

- ClearSight Analyzer software is enhanced to work with Spirent TestCenter's advanced capture features
- Real-time decodes – frames are captured and decoded during the test itself at rates up to 100 frames/second
- The full resolution of Spirent TestCenter's time stamp (10 nanoseconds) is displayed in the decode view
- Decoded Spirent TestCenter signature fields Ladder/bounce diagrams of BGP, OSPF, OSPFv2, RIP and RIPng
- Display of captured preamble for Ethernet frames

## BENEFITS

- *Get to Market Faster* – Using BPK-1029A, testers can dramatically decrease the time required to find and fix product and service problems and thereby get to market faster
- *Improve Product/Service Quality* – BPK-1029A enables higher product and service quality by:
  - Enabling testers to isolate, analyze and eventually fix quality issues found in the testing process
  - Increasing the number of test cases that can be executed in a given amount of time
- *Lower Product Development and Service Deployment Costs* – A disproportionate amount of test time is spent troubleshooting failed test cases. This is a costly and labor-intensive process usually involving highly skilled engineers. BPK-1029A reduces the time spent isolating and fixing these failures thus significantly lowering the cost of testing a given product release or service deployment.

## KEY FEATURES

- BPK-1029A includes a copy of the ClearSight Analyzer software enhanced to work with the advanced Spirent TestCenter capture features. ClearSight Analyzer is an advanced network monitoring and troubleshooting tool featuring:
  - An award-winning intuitive interface providing excellent drill down for in-depth analysis
  - A complete Triple Play analysis solution
  - Advanced voice and video analysis features
  - IPTV analysis solution
  - Comprehensive and easy-to-use filtering functions
- BPK-1029A supports real-time decoding of test traffic
  - Users can capture and examine both Tx and Rx control plane traffic on a given port
  - Users can select up to 4 ports and create a view interleaving captured frames
  - The ClearSight software supports freezing and clearing the display
  - Decoded traffic is simultaneously stored on the PC for post-test analysis
  - Supported up to 100 frames per second
- Full resolution of the Spirent TestCenter Timestamp. Spirent TestCenter time stamp has 10ns resolution. This resolution can't be viewed using other decode packages.
- Decoded Signature Fields. The Spirent TestCenter signature field includes critical test information that can't be viewed using other decode packages.
- ClearSight software supports ladder/bounce diagrams for key routing protocols
  - Routing protocol exchanges between peers are shown in ladder/bounce format including frame number, peer addressing, message type, timing information and length
  - Provided in real-time
  - Can be exported to \*.pdf
- Display of captured preamble for Ethernet frames.

## SUPPORTED MODULES

BPK-1029A supports all Spirent TestCenter test modules and personality cards.

## REQUIREMENTS

- A SPT-2000A Spirent 2U Chassis and Controller, SPT-5000A Spirent 5U Chassis and Controller or SPT-9000A Spirent 9U Chassis and Controller
- Operating system languages supported: English, French, German, Italian, Japanese, Korean, and Chinese (traditional and simplified)

## MINIMUM PC REQUIREMENTS

- Small Port System: 2-25 ports
  - 2.4GHz Pentium® 4 or equivalent
  - 512MB of free RAM
  - 10GB free disk space
- Medium Port System: 26-75 ports
  - 3GHz Pentium® 4 or equivalent
  - 2GB RAM
  - 15GB free disk space
- Large Port System: 75 ports and above
  - E6400 Core 2 Duo or equivalent
  - 3GB RAM
  - 100GB free disk space

## RECOMMENDED PC REQUIREMENTS

- Small Port System: 2-25 ports
  - E6300 Core 2 Duo or equivalent
  - 2GB RAM
  - 10GB free disk space
- Medium Port System: 26-75 ports
  - E6400 Core 2 Duo or equivalent
  - 3GB RAM
  - 100GB free disk space
- Large Port System: 75 ports and above
  - E6600 Core 2 Duo or equivalent
  - 4GB RAM
  - 100GB free disk space (disk should be 2 SATA 300 disks in a RAID 0 configuration)

## ORDERING INFORMATION

Spirent TestCenter Enhanced Capture and Decode Base Package A (P/N BPK-1029A)

## SPIRENT GLOBAL SERVICES

Spirent Global Services provides a variety of professional services, support services and education services — all focused on helping customers meet their complex testing and service assurance requirements. For more information, visit the Global Services website at [www.spirent.com/gs](http://www.spirent.com/gs) or contact your Spirent sales representative.

Spirent TestCenter™

**BPK-1029A ENHANCED CAPTURE AND DECODE BASE PACKAGE A**



Spirent Communications  
1325 Borregas Avenue  
Sunnyvale, CA 94089 USA

**SALES AND INFORMATION**  
sales-spirent@spirent.com  
www.spirent.com

**Americas**  
T: +1 800.SPIRENT  
+818 676.2683

**Europe, Middle East, Africa**  
T: +33 1 6137.2250

**Asia Pacific**  
T: +852 2511.3822