



Spirent TestCenter™ SIP/RTP/RTCP BASE PACKAGE A

Convergence is creating a new generation of integrated network devices and services that are much more complex than ever before. The resulting increased complexity, scarcity of testing skills and architectural shortcomings in current test systems hurt manufacturers' ability to ship products on time at escalating quality levels. They also slow service providers' ability to deploy networks that correctly offer Quality of Experience (QoE) the first time.

APPLICATIONS

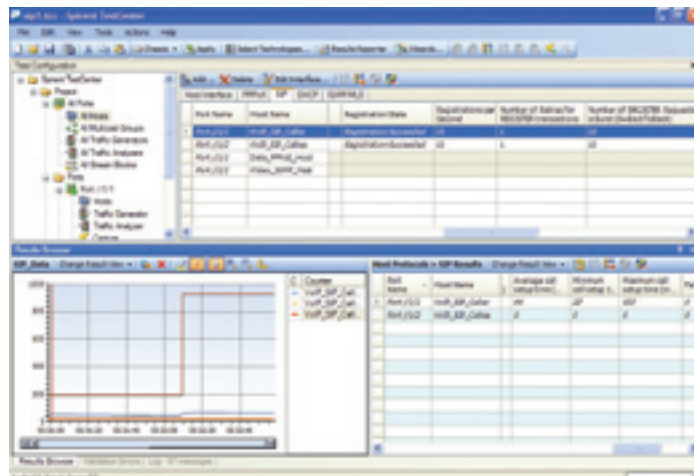
- This SIP/RTP/RTCP base package helps Spirent TestCenter customers to evaluate key performance parameters of Triple Play service infrastructure by emulating thousands of VoIP users (SIP UAs) along with other services and protocols on a single port
- A rich set of real-time results on both SIP signaling and RTP/RTCP data streams are available
- Spirent TestCenter helps users set up thousands of SIP UAs and VoIP calls with easy-to-use wizards

SIP/RTP/RTCP BASE PACKAGE A is a new feature introduced in the 2.15 release of Spirent TestCenter. With SIP (Session Initiation Protocol) natively available in the Spirent TestCenter application, Spirent TestCenter customers can emulate thousands of SIP-based VoIP phones (SIP User Agents) along with other services and protocol emulations already available in the Spirent TestCenter application.

- High-scale VoIP user (SIP UA) emulation and call generation
- Emulated RTP/RTCP data streams controlled by SIP signaling
- Various SIP commands available in Command Sequencer

BENEFITS

- Fully integrated Triple Play service emulation on a single Spirent TestCenter port
- Cost effective solution for large SIP call/load generation
- Supporting interactive control and designed events in Command Sequencer



KEY FEATURES

- Register SIP UAs
- Support 2000 VoIP calls per port
- Support emulated RTP/RTCP data streams between UAs
- Test results on SIP signaling as well as RTP/RTCP data stream results

TECHNICAL SPECIFICATIONS

SIP UA (Host) Configuration

- General host configuration
- Local SIP UDP Port
- Ring duration in sec
- SIP compact format
- UA number format with step

Proxy Server Configuration

- Proxy Server for IPv4 and IPv6
- Proxy Server UDP Port
- Proxy Server Domain Suffix

Data Plane Configuration

- RTP Source UDP Port
- Voice Codec (G.711, G.723.1, G.729)

Call Setup Configuration

- Call Request per sec
- Call Requests per burst
- Call Duration in sec

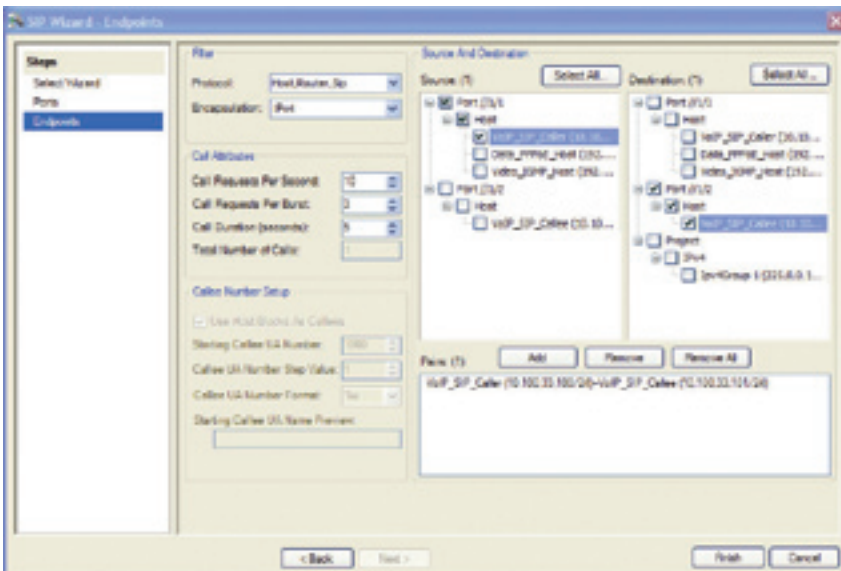
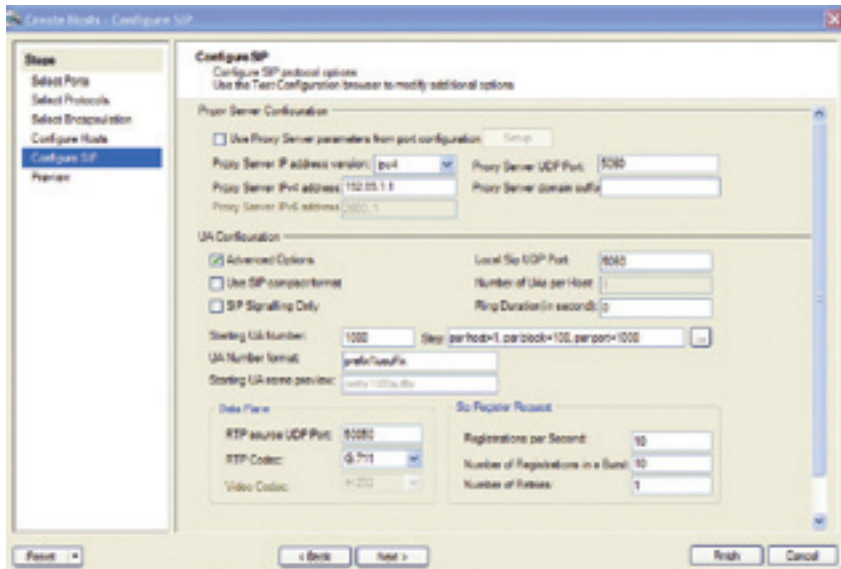
Other Configurations

- SIP Signaling only – With this option on, no RTP/RTCP stream will be sent after the call is established

SUPPORTED MODULES

Series 2000 modules provide higher performance than Series 1000 modules; contact your Spirent representative for details.

BPK-1060A is supported on all Spirent TestCenter Ethernet modules.



REQUIREMENTS

- Pentium® or greater PC running Windows® XP Professional SP2 with mouse/color monitor required for GUI operation. See Minimum PC Requirements section.
- One Ethernet cable and one 10/100/1000 Mbps Ethernet card installed in the PC
- A SPT-2000A Spirent 2U Chassis and Controller, SPT-5000A Spirent 5U Chassis and Controller or SPT-9000A Spirent 9U Chassis and Controller

Operating system languages supported: English, French, German, Italian, Japanese, Korean, and Chinese (traditional and simplified)

MINIMUM PC REQUIREMENTS

- Small Port System: 1-25 ports
 - 2.4GHz Pentium 4 or equivalent with 512MB of free RAM and 10GB of free disk space
- Medium Port System: 26-75 ports
 - 3GHz Pentium 4 or equivalent with 2GB of RAM and 15GB of free disk space
- Large Port (75+ ports)
 - E6400 Intel® Core™ 2 Duo or equivalent with 3GB of RAM and 100GB of free disk space

ORDERING INFORMATION

SIP/RTP/RTCP Base Package:
(P/N BPK-1060A)

SPIRENT GLOBAL SERVICES

Spirent Global Services optimizes your productivity with Spirent TestCenter over a broad range of technologies:

Professional Services

- Test lab optimization: Test automation engineering services
- Service deployment and service-level optimization: Vendor acceptance testing, SLA benchmarking, infrastructure and security validation
- Device scalability optimization: POC high-scalability validation testing

Education Services

- Web-based training: 24 x 7 hardware and software training
- Instructor-led training: Hands-on methodology and product training
- Certifications: SCPA and SCPE certifications

Implementation Services

- Optimized new customer productivity with up to three days of on-site assistance

Visit www.spirent.com/gs or contact your Spirent sales representative.



Spirent Communications
1325 Borregas Avenue
Sunnyvale, CA 94089 USA

SALES AND INFORMATION
sales-spirent@spirent.com
www.spirent.com

Americas
T: +1 800.SPIRENT
+818 676.2683

Europe, Middle East, Africa
T: +33 1 6137.2250

Asia Pacific
T: +852 2511.3822